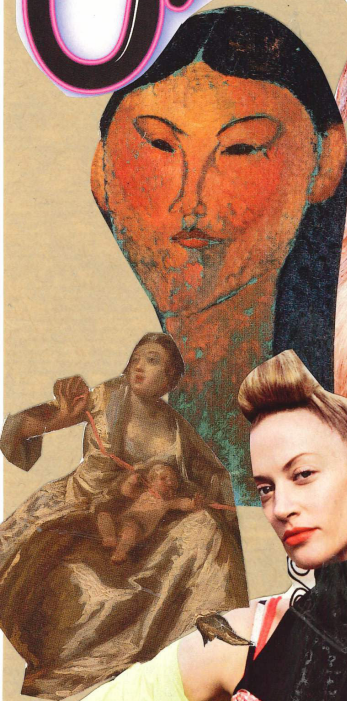


Elova Ting

Collective



'She had as many faces as voices.'

STAY
AS YOU
ARE,
MRS



DREAMING ONESELF AWAKE

SAINT
HELENS
UNIVERSITY
COLLEGE
STUDENTS.

CLASS
COLLECTIVE

HEART OF GLASS

LIVERPOOL
COMMUNITY
PRINT
STATION

ARTISTS

Front Cover

By Jenny Raynes

Images....

- 1. Megan Harding**
- 2. Pauline Strong**
- 3. Kayleigh Fowler**
- 4. Eleanor Railton**
- 5. Charlotte Railton**
- 6. Andrew Core**
- 7. Alex Suanders**

Back Cover

By Caitlin Ryan





**Protect your most
valuable asset
from depreciation**



this energy is for you.

Once Upon

A collage-style poster. At the top, the words "Once Upon" are written in a large, black, serif font on a light beige background. Below this, a woman with voluminous, curly red hair is shown from the chest up, looking slightly to the left. She is holding a large bouquet of flowers, including yellow daffodils, purple irises, pink carnations, and a red tulip. The background behind her is a mix of textures and colors, including a blue sky, a yellow sun-like pattern, and a green and purple floral design. To the right of the woman, there is a small illustration of a fairy with pink hair, wearing a red tutu and holding a wand. The text "IN SEARCH" is on a white torn paper strip, "SHOCK" is on another, "SPEAKING IN WHISPERS" is on a larger one, and "APPE" is on a small strip to the right. At the bottom right, "MAKES IT DIFF" is on a white strip.

IN SEARCH

APPE

SHOCK

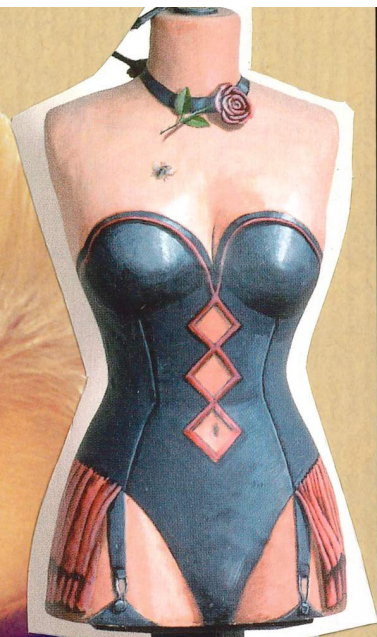
SPEAKING

IN

WHISPERS

MAKES IT DIFF

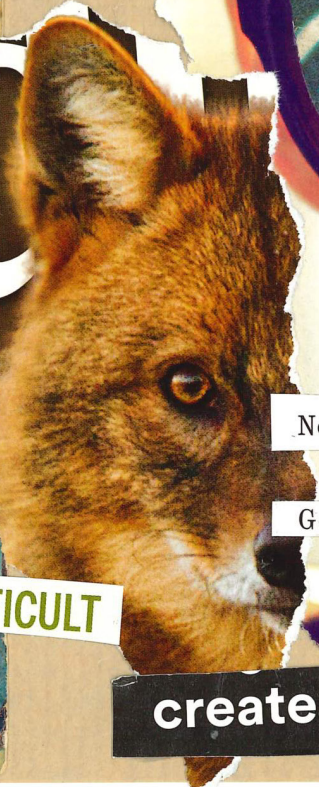
a Time



'I did not see

I could not hear

PROVAL



New Voices

Getting under the skin

ICULT



create your future.

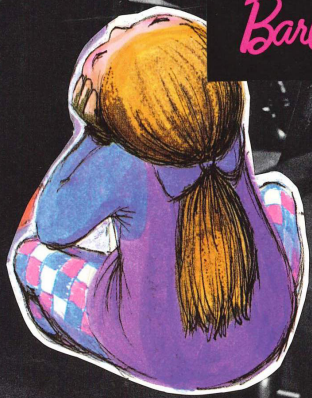
WE

ARE



BARBIE

Barbie



RONALD VAN DER KEMP
As Céline Dion on the front
court...
Ken
de
an
the
"Pe
tha
uni
beau

...
an overload of disposa
clothes, we need to take
back and take our time
make fewer but real, beau
clothes that will last."
- Ronald van der Kemp



PHILIPP PLEIN™ X TONY KELLY

PLEIN.COM

TO LURE A DUCK
THE ART OF THE DECOY

Once Upon

EVERY WEDNESDAY

No.160 4th M

Great Migrations

THE LOST

at Time

PRICE 8p

- Migration routes**
- Sandhill crane
 - Pronghorn
 - Monarch butterfly
 - Mexican free-tailed bat

0 mi 500

Monarch Butterfly Biosphere Reserve

WILLIAM E. MCNULTY AND LISA R. BITTER, NGM STAFF. SOURCES: ROWE SANCTUARY, NATIONAL AUDUBON SOCIETY (CRANE); MICHAEL SUTOR, UNIVERSITY OF CALIFORNIA (PRONGHORN); MONARCH BUTTERFLY FUND AND MONARCH WATCH (BUTTERFLY); GARY MCCrackEN, UNIVERSITY OF TENNESSEE (BAT)

March, 1972



SUPPORT
THE

WOMEN

A
A
A!

My
BODY

MY CHOICE

